

Carroll
12
1

Eduardo Angulo

Suite Mexicana

op. 16

für Zupforchester

Jarabe Colimeño

Allegro moderato ♩ = 100

Enérgico

The musical score for 'Jarabe Colimeño' is written for mandolin in treble clef with a key signature of two sharps (F# and C#). The time signature is 6/8. The score consists of eight staves of music. The first staff begins with a 6/8 time signature and a dynamic marking of *f*. The second staff has a *sim.* marking. The third staff has a *p* marking. The fourth staff has a *f* marking. The fifth staff includes first and second endings. The sixth staff has a *div.* marking. The seventh staff has a *sim.* marking. The eighth staff has a *si* marking.

31 *p*

35

39 *f*

43 *sim.*

46 II

49 *Grazioso*
p sub.

53 I

57 *Enérgico*
f *ff*

60 *sim.* *f*

63

67

71 *p*

75 *mf*

Fin de
P.

79 *ff*

83

Serenata

Lento $\text{♩} = 80$

7

9 *p*

13 *p*

Pouce

17 *mf*

Plane

1. 2.

20 *mf*

24

28 *f*

32 *p*

Pouce

36 *pp*

plane

1 3 4

Huapango Criollo

Allegro ♩. = 112

The musical score for "Huapango Criollo" consists of ten staves of music, all in treble clef and the key of D major (two sharps). The tempo is marked "Allegro" with a quarter note equal to 112 beats per minute. The piece begins with a 6/8 time signature, which changes to 4/4 at the start of the second staff. The score includes various dynamics such as *p* (piano), *f* (forte), *mf* (mezzo-forte), and *sim.* (sforzando). Articulations like accents (*v*) and slurs are used throughout. Handwritten annotations include "1. sin" and "2. sin" under the first staff, and a circled *p* dynamic marking in the second staff. The piece concludes with a *f* dynamic marking and a fermata on the final note.

48 *met* *div.*

52 *mp*

56

60 *f* *met*

64 *div.*

68 *P sub.*

73

78 *p*

83 *f* *div.*

88

92 *ff*

96

Vals

Introducción ♩ = 132

G.P.

Musical notation for the introduction section, measures 1-15. The music is in G major and 3/4 time. It features a series of chords and melodic lines. Measure 15 includes a *rit.* (ritardando) marking.

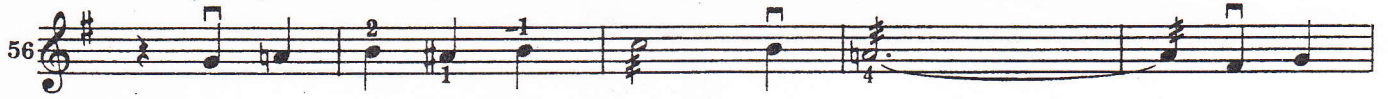
Tempo de Vals Lento ♩ = 92 (La Zandunga)

Musical notation for the main waltz section, measures 16-45. The tempo is marked as *Tempo de Vals Lento* with a quarter note equal to 92 beats per minute. The music is in G major and 3/4 time. It features a series of chords and melodic lines. Measure 16 includes a *p* (piano) marking. Measure 36 includes a *mf* (mezzo-forte) marking. Measure 41 includes a *poco rall.* (poco rallentando) marking. Measure 45 includes a *Fin* marking.

Animato

Musical notation for the final section, measures 46-50. The tempo is marked as *Animato*. The music is in G major and 3/4 time. It features a series of chords and melodic lines. Measure 46 includes a *p* (piano) marking. Measure 50 includes a *Fin* marking.

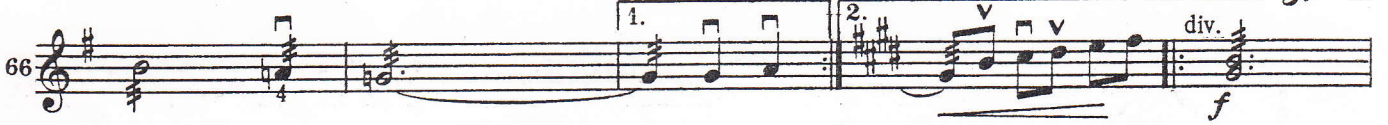
poco a poco accel. (en la repetición/in der Wiederholung)



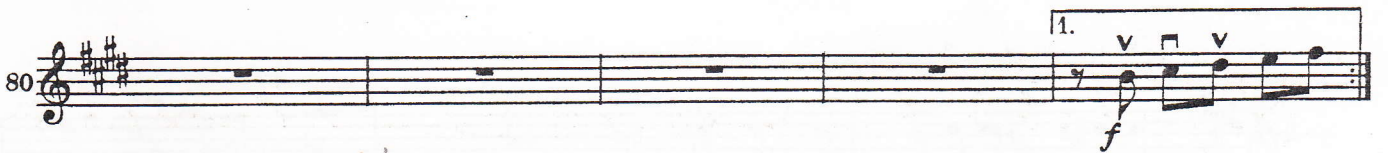
accel.



Piu mosso $\text{♩} = 72$

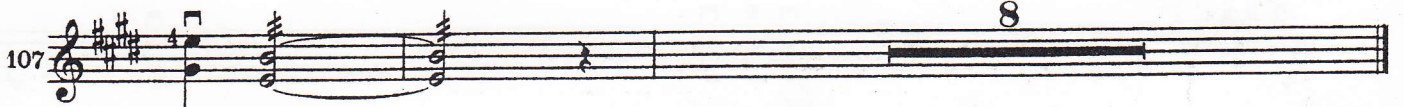


cielito lindo (mexikanische Volksweise)



Reprise 21
D.C. al Tempo de Vals

8



poco a poco rit.

Polka

Vivace ♩ = 138
Enérgico

Handwritten notes: *gema met* (above staff 28), *superior delant* (to the right of staff 21).

Staff 1: *f*, 1-3, *sim.*, *v*

Staff 5: *mf*, *sim.*, *v*

Staff 9: *v*

Staff 13: *f*, *sim.*, *v*

Staff 17: *v*

Staff 21: *sim.*, 1., *v*

Staff 24: 2., *v*

Staff 28: *mf*, *v*

32 *sim.*

36 1. 2. *sim.*
mf

39

43 *f.*

47

51 *mp* *2x Pizz*

55

59

63

67 1. 2. *f*
div. 4

69 *mf* *div.*

73

77 *mp* *Grazioso*

80

84 *f*

89 *mp*

93 *Enérgico* *ff*

97 *div.*

101 *ff* *Lento* ♩ = 60 *Tempo* ♩ = 138